

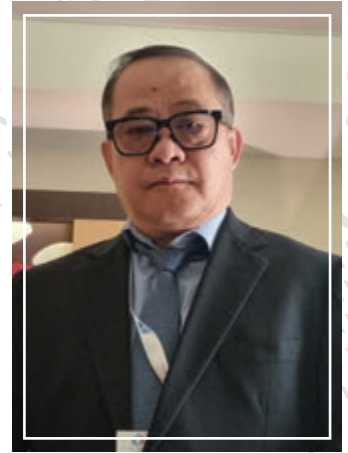


*Striving for
Excellence*

P. O. Box : 86057 Al Jazeera
Port Ras Al Khaimah - U.A.E.
Tel : +971 7 243 4047
Email : info@raktechllc.com
Website : www.raktechllc.com

ABOUT RAKTECH

RAKTECH LLC established in 2011 and emerged as a reliable and competitive ship repair partners for marine and off-shore operations in the region. We handle wide range of tasks including ship repair and shipyard operations. We concentrate on yard work and therefore we can focus our full attention to each customer's wants and needs such as repair, rebuild and do conversion of the ships under optimum conditions, regardless of the weather. We know that time is important and therefore we know how vital importance it is to solve the tasks on time. Our key people are from renowned dry-docks with 20+ years of experience at the different shipyards in UAE and abroad.



The goal for our ship repairing business is to be the excellent partner with ship owners. Our Ship Repair Department have full capacity to provide the ship repair service with high quality, in floating, quay and dry docking such as follows:

- **Rudder/propeller-shaft complex repairs;**
- **Main engines and diesel-generators repairs;**
- **Automation equipment repairs and installation;**
- **All types of fabrication/welding works; etc...**

RAKTECH LLC specialises in providing engineering solutions to industrial customers in the region. Together with the technical knowledge of our experienced workforce, and the backup of our principals, we are your ideal partner in Ship Repair, Industrial Repair, Trade & Service in the region.

Availability 24 hours a day, 7 days a week, 365 days a year.



Health, Environment and Safety

Providing safe and healthy environment for all employees, contractors and customers. Occupational health & safety objectives are set and reviewed periodically. RAKTECH is certified to **ISO 14001:2015 and OHSAS 18001:2018**

Quality Policy

To achieve total customer satisfaction by delivering job excellence through a zero defect policy and timely delivery of all products, services, and solutions to maximize and surpass customer expectations. RAKTECH is certified to **ISO 9001:2015**.

Partnership

We work together continuously with all our customers and partners towards achieving excellent growth, success and happiness.

MISSION & VISION

RAKTECH LLC delivers innovative solutions and specialized services to the Marine & Industrial engineering sector; to be valued by our customers and employees.

To be admired as a leading service provider to the marine and industrial sector, using the best available technologies which meets or exceeds the changing requirements of worldwide customers; rewarded through significant financial growth and best maintenance free green technology.



Expertise

RAKTECH LLC offers total solutions in ship repair. Our speciality is providing mobile staff, often with very little notice for relatively short, labour intensive projects such as Ship Repair, Conversion and Offshore Mobilization.

As client resources are often stretched, we take care of every aspect of personnel logistics and welfare to ensure that good quality, productive labour is available reliably when and where it is needed. All of our staff have a solid background in Ship Building, Repair and Conversion and are trained to the highest industry standards with a strong focus on Quality, Health and Safety.



SHIP REPAIR

Machine Shop

RAKTECH LLC puts quality, experience, and commitment into every phase of the machining process. We maintain state of the art machining capabilities and full focus on quality inspections. Our attention to detail ensures quick, efficient turnaround at a competitive price and on-time delivery of your precision machined component.

Fabrication Division offer its services for the manufacture of engineered Products for various equipment and systems. Design and engineering capability, including CAD facility, exists for reverse engineering.



OUR SERVICES

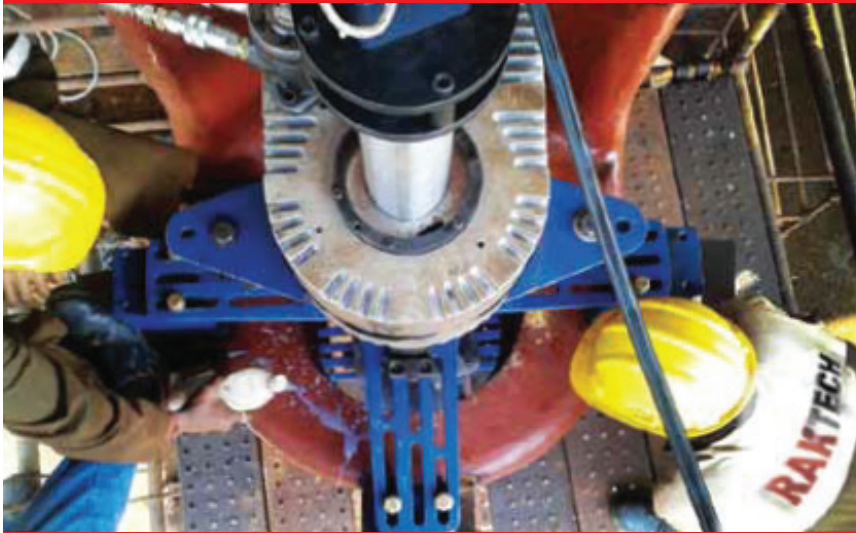
Laser Alignment

We provide a complete service for all applications including main journal pockets including full NDT and laser alignment to ensure a high degree of accuracy.

Alignment of main engines, gearboxes, generator sets. We have a wide experience in alignment of multiple shafts and bearings. We can assist in taking alignment readings for stern tube alignment and a frame applications as well as Rudder alignment of steering gear to pintle bush. Quick and effective measurement of bores, on Stern tubes, diesel engines, strut bearings, compressors, engines, and pumps. All on site with no additional brackets or costly fabrication of parts.

Our teams of technicians come to you to carry out the repairs. We maintain an extensive range of equipment to cope with most aspects of plant maintenance including the machining of large or small items.

IN-SITU Boring



Precision line boring is a core speciality of RAKTECH. We undertake the line boring of damaged or misaligned bores with a wide range of our custom designed equipment.

Benefits of Line Boring Repairs

- Fast response (can be the same or next day)
- Downtime reduced
- Always available, 24x7 service
- No Need to move the engine block
- Restored to original OEM specification
- Guaranteed and verifiable results
- Comprehensive technical backup

LINE BORING from 50 mm to 1,000 mm

Marine Services



- › Dry Docking
- › Afloat Repair
- › Welding & Fabrication
- › Pipeline Fabrication & Installation
- › Electrical Control
- › Machining Services
- › HVAC
- › Engine Repair



SHIP BUILDING

At RAKTECH, we are committed to delivering world-class shipbuilding solutions that combine innovation, precision engineering, and uncompromising quality. With decades of expertise in the marine industry, our facilities are equipped to design and build a wide range of vessels — from workboats and barges to advanced catamarans and offshore support craft. Each project is executed under stringent quality standards, ensuring durability, performance, and safety across every vessel we construct. Backed by a skilled workforce, cutting-edge technology, and a customer-first approach, we serve clients across the marine, oil & gas, and industrial sectors. From concept to launch, we take pride in turning complex maritime visions into reality, ensuring on-time delivery and long-term operational excellence.



SHIP REPAIR & CONVERSION

RAKTECH provides superior ship repair and conversion amongst other services, to serve all vessels calling UAE port. With our vast experience and mastery in the field, our highly skilled team is equipped to, execute all kinds of repair, and conversions of projects at a competitive price.

We undertake maintenance and repairs for a wide range of on board equipment including: engines, generators, gear boxes, propellers, stern tube seals, pumps, purifiers, compressors, boilers, steam installations, fans, turbo chargers, fresh water makers and water treatment systems, condensers and heat exchangers, winches, cranes, electric motors, stabilizers, thrusters, and steering and DP systems.



Our Basic Ship Repair Services Include

- Rudder/propeller-shaft complex repairs;
- Bearing Load Testing
- Pump, Pipe and Valve Repairs
- Steel fabrication (hulls and super structures)
- Aluminum fabrication (hulls and super structures)
- Hull treatments (including hydro-blasting, grit blasting and painting & coatings)
- Electrical services
- Hydraulic services
- Carpentry and joinery
- Mechanical works such as Tail shaft, Propulsion systems, Propeller repair...etc.
- Overhauling of Pumps/Motors/Cranes... etc.



FABRICATE & WELDED SPOOLER FRAME STRUCTURE WITH WALKWAY PLATFORM FOR ROPE STORAGE CONTAINER.



FABRICATION OF USBL PIPE FOR UNDERWATER POSITIONING SYSTEM.



FABRICATE & INSTALLED AFT SHEAVE SLIPWAY WITH WALKWAY PLATFORM FOR NODE HANDLING.

- > Mechanical
- > Propulsion Services
- > Heat Treatment





ABOUT NGC MARINE

Nanjing High Accurate Marine Equipment Co., Ltd. (NGC Marine) was established in 2007 as an independent entity from the NGC Group, focusing on both commercial and military marine sectors.

As a high-tech and fully qualified enterprise, NGC Marine provides a wide range of advanced transmission and propulsion equipment for high-tech vessels and offshore platforms. Its product lineup includes controllable pitch propellers (CPP), azimuth thrusters, podded and tunnel thrusters, main and auxiliary marine gearboxes, high-speed gearboxes, shafting and rudder systems, and jack-up platform systems.

With a production facility spanning nearly 160,000 square meters, the company has an annual capacity exceeding 1,000 sets of marine equipment. NGC Marine operates a comprehensive quality management system certified by over 10 classification societies and ISO standards.

Innovation is central to the company’s growth, with over 150 patents and 40+ awards for technological achievements at provincial and national levels. Its products have been used in key national and international projects, with many leading the domestic market in both technical specifications and market share.

Recognized globally for its quality, NGC Marine has supplied equipment to thousands of vessels worldwide through a robust sales and service network. In 2021, it was honored as a National Specialized, Unique, and Innovative “Little Giant” Enterprise, underscoring its innovation and industry leadership.

NGC Marine is dedicated to becoming a world-class provider of large-scale marine transmission and propulsion systems, delivering high-quality products, excellent service, and innovative solutions to meet the evolving needs of its global customers.



NCP Series

Controllable Pitch Propeller

| | |
|------------------------|-----------------------|
| Hub diameter | : 390-2100mm |
| Blade diameter | : 1100-9000mm |
| Max transmission power | : 60000kW |
| Blade No. | : 4, 5 |
| OD box position | : Gearbox or Shafting |



NRP Series

Azimuth Thruster (FP/CP)

| | |
|--------------------|---------------|
| Input Power | : 100-1200kW |
| Input Speed | : 600-2100rpm |
| Propeller Diameter | : 600-6000mm |



NFT/NCT Series

Tunnel Thruster

| | |
|--------------------|---------------|
| NFT Power | : 37-3300kW |
| Propeller Diameter | : 500-3300mm |
| NCT Power | : 160-3300kW |
| Propeller diameter | : 1000-3300mm |



CK Series

Non-reversible Gearbox

| | |
|---------------------------|----------------|
| Max Transmission Power | : 30000kW |
| Max Transmission Capacity | : 166.67kW/rpm |
| Max Thrust | : 3150kN |





MACHINERIES & MACHINE SHOP



Boring Machine



Cutting Machine



Vertical Lathe Machine



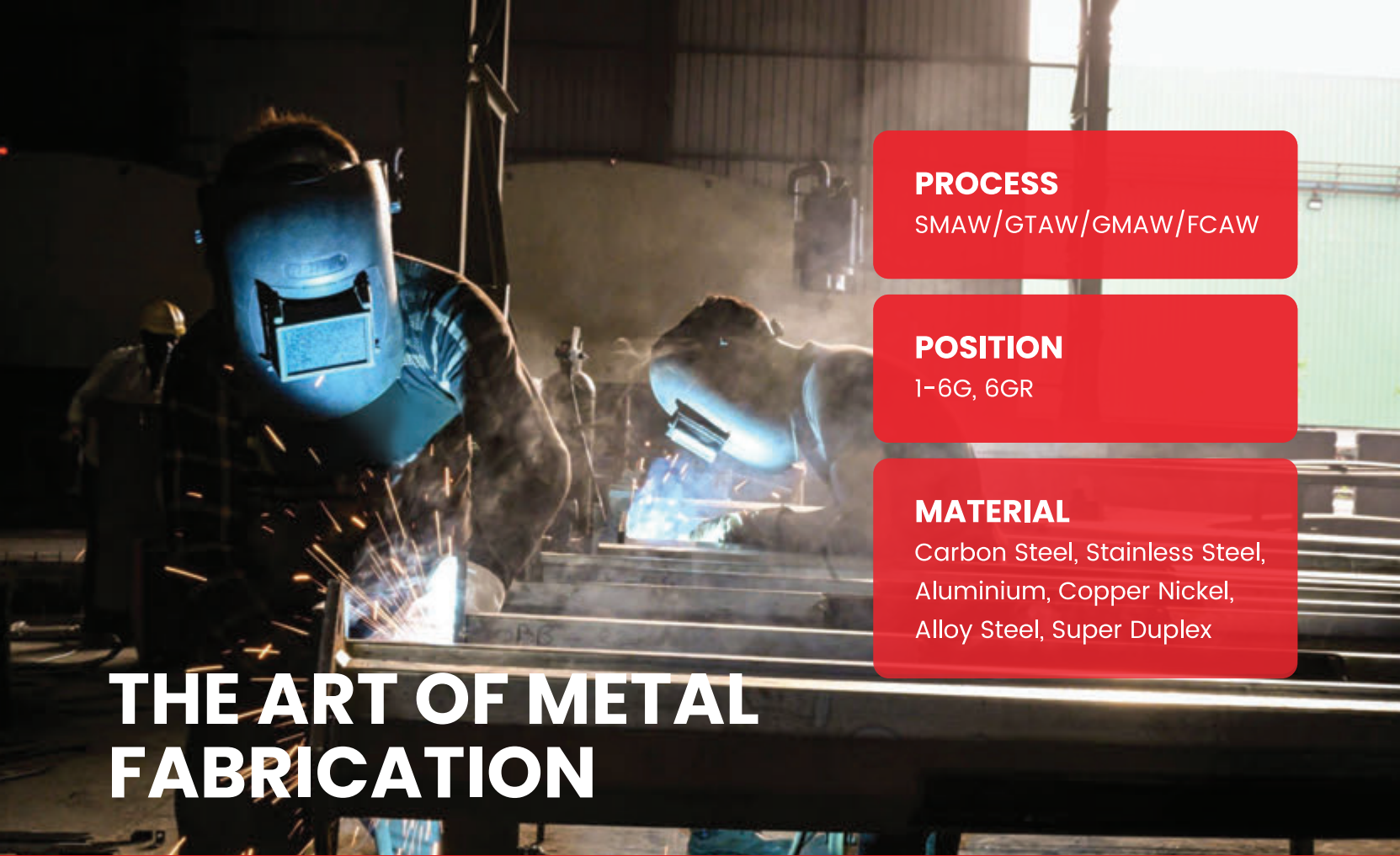
CNC Machine



Lathe Machines



Milling Machine



PROCESS

SMAW/GTAW/GMAW/FCAW

POSITION

1-6G, 6GR

MATERIAL

Carbon Steel, Stainless Steel,
Aluminium, Copper Nickel,
Alloy Steel, Super Duplex

THE ART OF METAL FABRICATION

Skill & Certified Resources such as Structure and Pipe Fabricators, Welders

Drawing from the rich workforce, the company has also attracted the finest among the available tradesmen to assure the high quality products and timely delivery essential to serving its customers.

All our shop crew are educationally qualified and practically experienced on their respective areas of expertise. Our workforce is continuously trained for the safe and accurate operation of sophisticated machineries.

Each job is discussed in detail before the fabrication commencement and daily tool box talks are conducted to keep the job well on track. Quality control team checks the job at every stage of fabrication and make sure the job is performed as per the tolerances as per client requirements.





Dredgers

RAKTECH LLC is competent to carry out a variety of dredging equipment/machinery jobs that range from the spud carrier on the aft end of the dredger up to the cutter head in the forward section of the dredger.

Starting with the cutter shaft line we have carried out work as follows:

- Removing all coupling bolts, fitted or pilgrim type.
- Dismantling all intermediate bearings.
- Rigging out from cutter ladder and all intermediate shafts.
- Removing existing old or damaged bearing from cutter bush housing, this includes bonded bearings by chocking compounds or bearings with metal shell.
- Calibration, Alignment, Re-Calibration, In-Situ Boring (if required), Bearing Installation, Shaft Installation, etc.



INDUSTRIAL EQUIPMENT REPAIRS

RAKTECH LLC specializes in repair of pumps and valves. Normally used in power plant, desalination plants, Oil & Gas and other industrial sectors. Valve and Pump repair is a specialised service carried out by us, which includes dismantling of the equipment, root cause analysis of the problem, blasting and coating with high grade polymer epoxy, machining, pressure testing and submitting complete report as per AIS standards. The major customer in this category are DUBAL, DEWA, SEWA, Port Authorities.

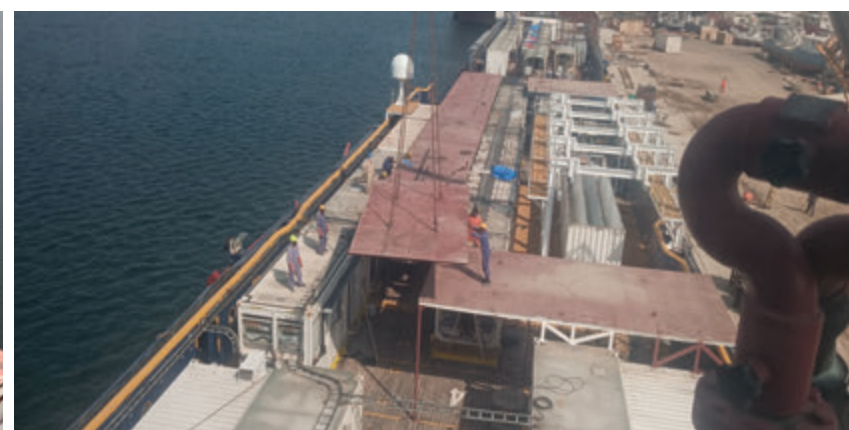
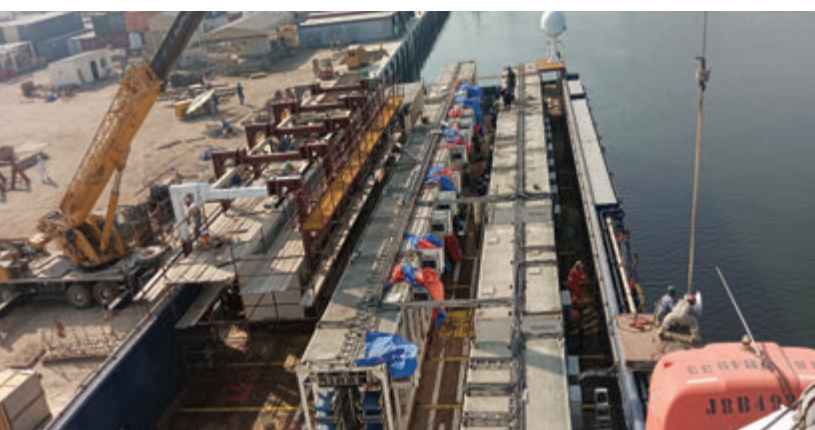


FABRICATE AND INSTALLED SLIDING STRUCTURE FOR PILING

– FUJIAN OFFSHORE PROJECT

Project References

- › Ship repairing works which includes propulsion system (propellers, tail shaft, rudder), Engines, pipelines, pumps, valves for all the vessels in Al Jazeera Port and Shinyang Yard.
- › Drydocking and repairing of fishing trawlers.
- › Conversion and modification of seismic vessels.
- › Sinker pipeline project – 8 KM for Boskalis.
- › Repairing of cutter shafts of dredgers of NMDC.
- › Fabrication and installation of propulsion system including Laser alignment and in situ line boring of stern tube on vessel Al Marjan.
- › Overhauling of Main Engines and Azimuth thruster of vessel Woongjin T 3600.
- › Fabrication of Aluminum Mast on Vessel Altus Excertus.
- › Fabrication and installation of spud on 4 vessels of BGP.





Vibration Analysis

In recent years, it has become standard practice to regulate vibration aspects for a new building on a contractual basis. Limit values that must not be exceeded during operation of the ship are defined as being part of the specification. A new common practice is usage of Vibration analysis as Condition monitoring tools to predict the possible failure as well as Fault diagnosis tool. A regular measurement of the crucial equipment is very professional approach to avoid sudden breakdown or catastrophic failure.

The design and construction of a ship free of excessive vibration continues to be a major concern and, as such, it is prudent to investigate, through analysis, the likelihood of vibration problems early in the design stage. Vibration analysis is aimed at the confirmation of the many design considerations associated with:

- > **Stern configuration**
- > **Main propulsion machinery**
- > **Propeller and shafting system**
- > **Location and configuration of major structural assemblies.**

Motor Rewinding Repair Services Shop

- > Repairs, Electrical LT Motor Rewinding, Redesigning and Reconditioning of A.C. Stators and alternator made to its original / designed specifications and tested according to the latest International / National Standards.
- > Field services provided by our Technicians and Engineers for Installation of Coils of large machines at site to save clients cost and time.
- > Rebuilding of worn out shaft & housing using low heat thermal spray technology. Replacement of new shaft and bearing housing.
- > Dynamic Balancing of rotating machines up to 10 Tons weight on microprocessor based machine.
- > Vibration Analysis and In-Situ dynamic balancing.
- > Residual life assessment.





The pictures shown are for illustration purposes only. The Dubai Maritime City facility are belongs to Dubai Govt. (U.A.E). RAKTECH LLC is the stakeholder for Dubai Maritime City - Dubai.

DUBAI MARITIME CITY FACILITIES

- > 6000 tons ship lift size 130 m x 45 m
- > 3000 tons ship lift size 90 m x 35 m
- > 720 tons capacity boat hoist
- > 31 dry berths of 100 m length

State of the art facilities comprise of:

- Ship Yard
- Ship Repair
- Workshops
- Warehouses
- Showrooms
- Spare parts suppliers with in the city
- Yacht manufacturing and repair

RAKTECH has 10 ton overhead crane in 2 workshop, Dynamic Balancing Machine, CNC machines, warehouse, labour camps for employees.



AL JAZEERA PORT RAS AL KHAIMAH

The pictures shown are for illustration purposes only. The AL Jazeera Port facility are belongs to Ras Al Khaimah Govt. (U.A.E). RAKTECH LLC is the stakeholder for AL Jazeera Port - RAK.

- > 50,000 Sqm Dry Dock and Ship Lifting
- > 12 Dry Berths
(67 m x 30 m x 8, 77.5 m x 30 m x 4)
- > Synchronised lifting capacity
1100 Tons (Size 50 m x 18 m)

Dry Docking, Ship Repairing, Marine Operations, Agency Service, Cargo Handling and Warehouse Storage with a total area of 450,000 Sqm

Adjacent Area has nine jetties of 1,100m with two portable ramps, barge accommodation up to 110 m.



**One-Stop Shop for
Marine / Industrial Services**

RAKTECH

Striving for Excellence

RAKTECH is accredited to ISO 9001, ISO 14001 & OHSAS 18001



RAKTECH LLC - Head Office

PO Box 86057, Al Jazeera Port
Ras Al Khaimah - United Arab Emirates
Tel.: +971 7 243 4047, Fax: +971 7 243 4048

RAKTECH LLC - Dubai Branch

PO Box 82351, Dubai Maritime City
WS124A, Dubai - United Arab Emirates
Tel.: +971 4 243 2634, Fax: +971 4 243 2617